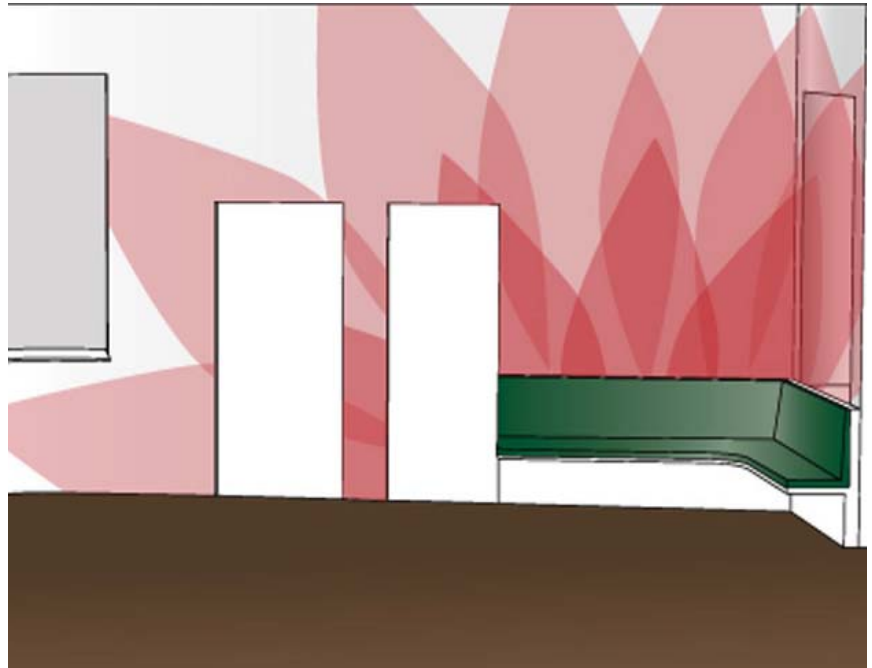


conversion of a gynaecological practice in Berlin / Prenzlauer Berg

Project data:

project type: conversion /interior design
year: 2009
location: Berlin / Germany
client: private
size: 97 sqm / 1050 sqft.
phases: 1 - 9
status: finished in Aug. 09

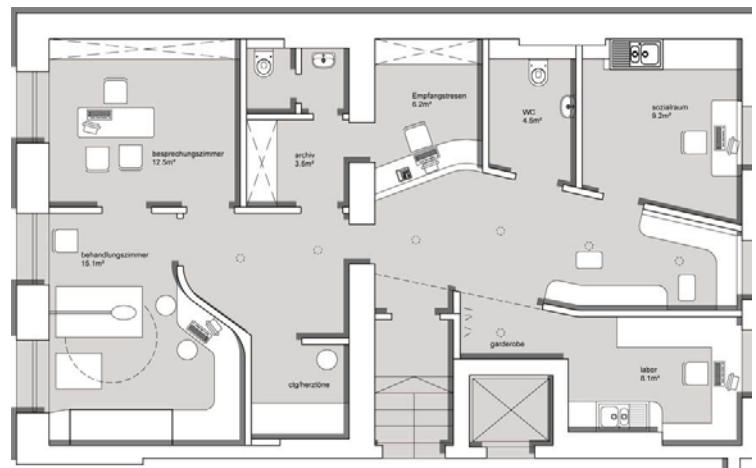


Project description:

The challenge with the gynecological practice of Dr. Rehn in the Kollwitzstraße was to generate a design, coordinate and harmonize it with the client and realize it in a very short amount of time. The leitmotif of the design concept is based on the existing corporate identity of the praxis, the water lily. It creates an amorphous spatial arrangement which generates out of the former functionally linked spaces a continuous flow of spaces. The organic design of the spatial flow is supported by floral graphics in dominant areas of the practice. The visitor is greeted by an open and friendly entreé, the consultation is perceived merely as an event, which is enhanced by the extensive offer of the practice. Dr. Rehn.



view from waiting lounge to foyer



floor plan



The waiting lounge



The reception