

Preliminary Design Competition for the Hartberg Castle

Project data:

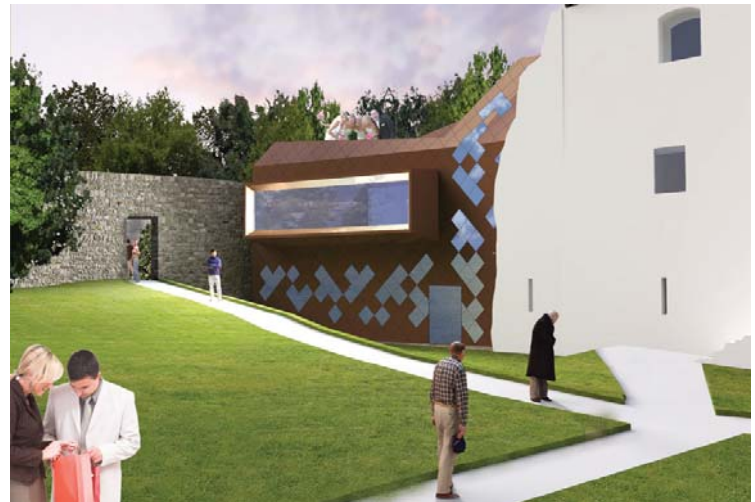
| | |
|---------------|--------------------------|
| project type: | Building Design |
| year: | 2010 |
| location: | Hartberg/ Austria |
| client: | Municipality of Hartberg |
| size: | 1770 m ² |
| phases: | -- |
| status: | Competition |



Project description:

The Hartberg Castle is nowadays situated in a park, which is surrounded by a historic defense wall. The aim of the competition was to achieve a preliminary design for a modification of the castle of Hartberg including two annexes, a Western and Eastern part. The western part is integrated in the existing historic ensemble and fills-up the gap towards the wall. The new service rooms for the castle are situated here, as well as a new multifunctional room. A panoramic window provides a perfect view over the park and creates a visual connection to the eastern annex.

The Eastern building is oriented both towards the main entrance of the park and the Northern entrance of the Brühlgasse. It is organised as a pavilion for representation and as a platform for the enterprise Ringana and their “open laboratory”, build over an underground production facility.



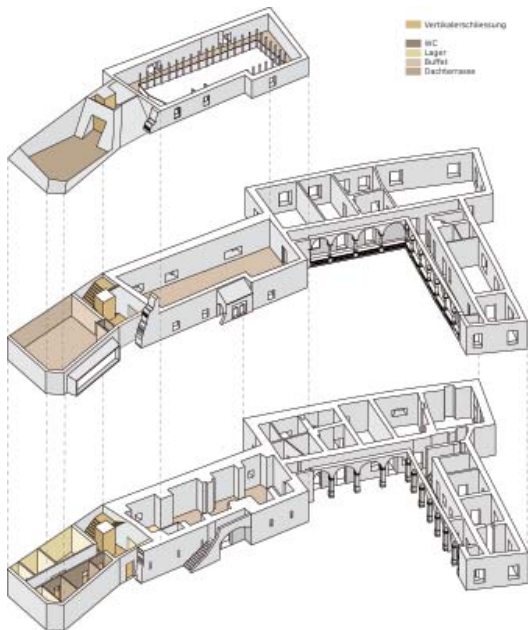
Annex West - Service Rooms



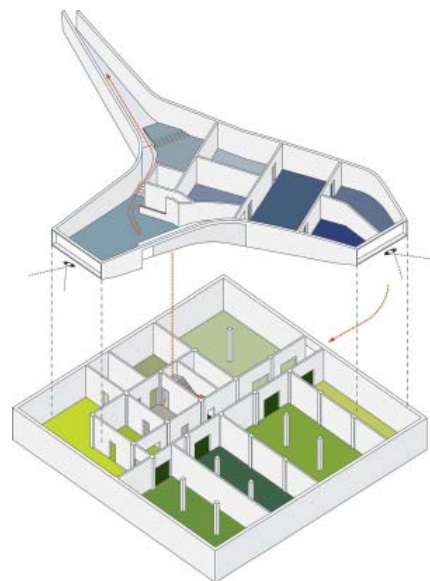
Annex East - Pavillion



Site Plan



- Vertikalschließung
- WC
- Lager
- Duffel
- Dieteresse



- Empfang
 - Multifunktionsraum „Zelle“
 - Hautanalyseraum
 - Negativ-raum
 - Positiv-Raum
 - Sinne-Raum
 - Kundenservice
 - Verbindungsgang zum Schloss
 - Vertikalschließung
-
- Eingang Produktion
 - Spindel
 - Vorraum
 - Büro Produktion
 - Büro Forschung und Entwicklung
 - Korridor
 - Vorraum Produktion
 - Produktion
 - Lager
 - Rehasoffe
 - Kartonage
 - Gebinde